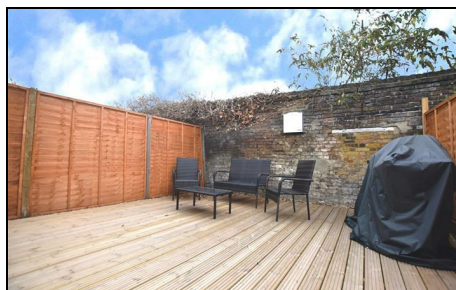
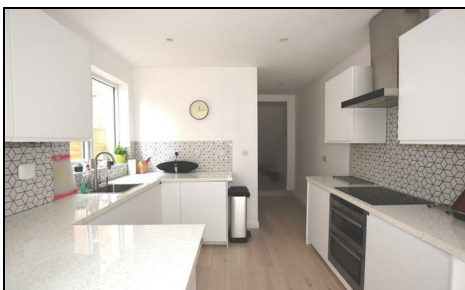


Boundary Road Colliers Wood, SW19 2DE

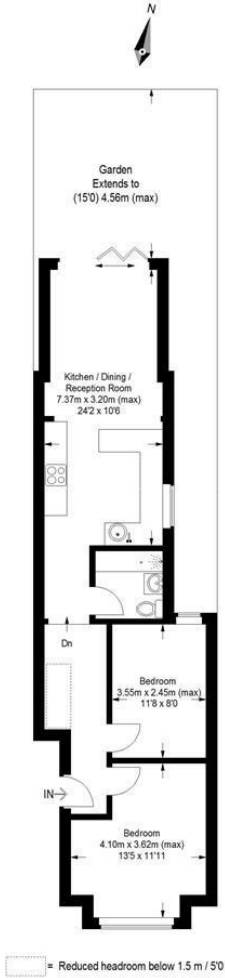
£479,950 Leasehold



A stunning two double bedroom ground floor maisonette, extended on the ground floor offering exquisite living space and private rear garden. In a great location close to Colliers Wood underground station and local shopping facilities.

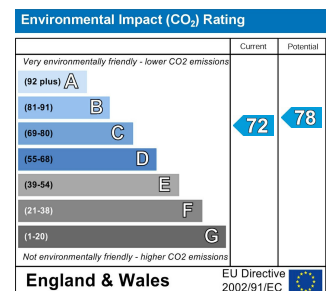
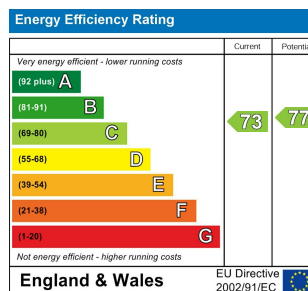
Boundary Road, SW19

Approximate Gross Internal Area = 59.8 sq m / 633 sq ft



This floor plan is for representation purposes only and is not drawn to scale. Whilst every attempt has been made to ensure its accuracy measurements are approximate only and should be checked before making any decisions reliant upon them.
Copyright Bespokeplans.co.uk 2017
(D373291)

- Two Double Bedrooms
- Private Garden
- Extended on the Ground Floor
- EPC Rating C



For Free Mortgage Quote and Best Mortgage Rates, call an Ellisons Mortgage Advisor on 020 8544 0518



Although these particulars are believed to be correct, their accuracy is not guaranteed and they do not form part of any contract.

Celebrating 30 years of successful Sales and Lettings in Merton

